

System Requirements

- Pentium 1 Gigahertz (GHz) processor or faster
- At least 1GB of RAM
- At least 2GB of available space on the hard disk
- USB 2.0/3.0

software only supports the following operating systems:

- Microsoft Windows Vista
- Microsoft Windows 7
- Microsoft Windows 8
- Microsoft Windows 10

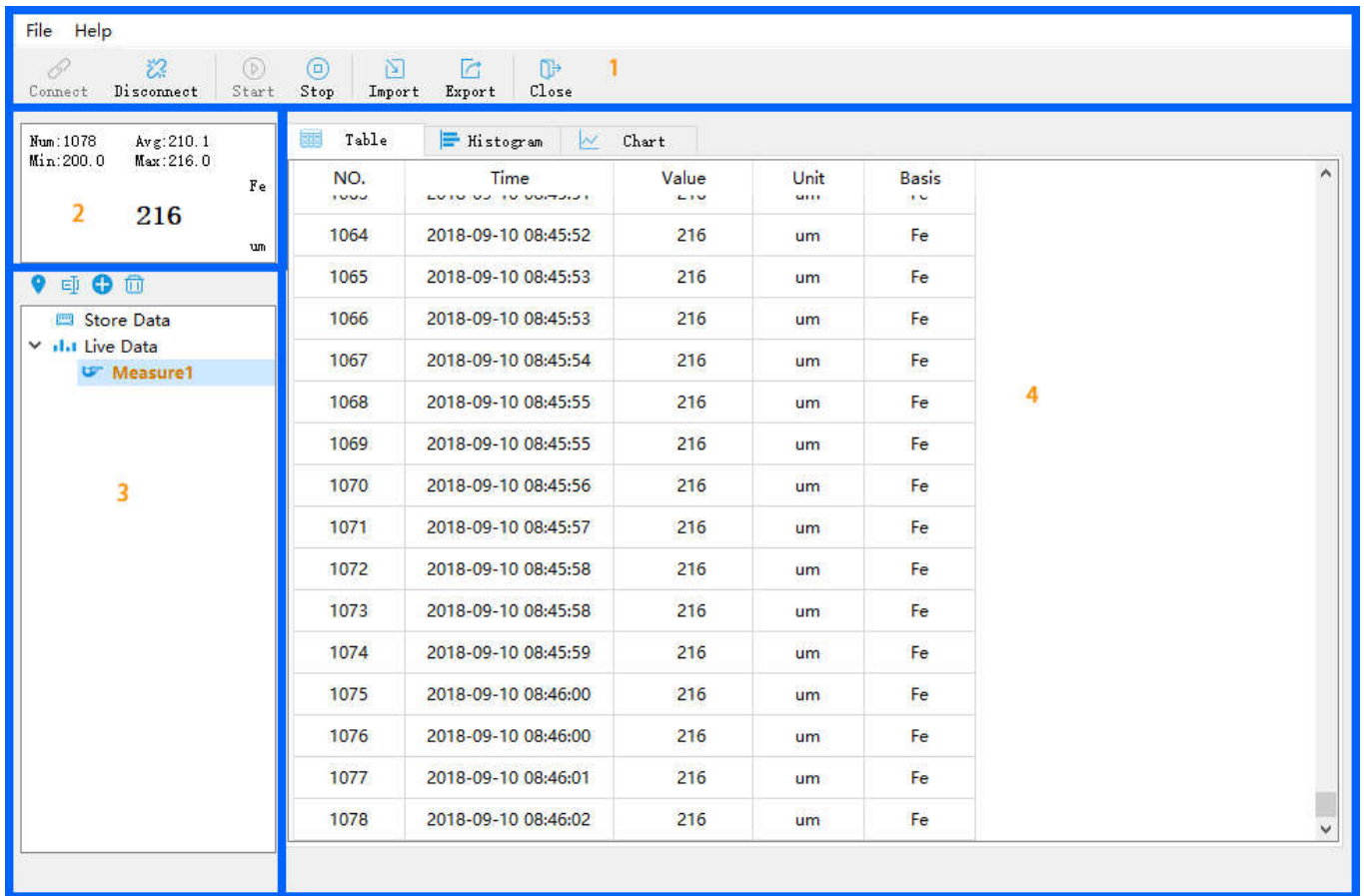
If your Windows does not contain the corresponding service pack version, please perform a Windows update first.

Installing the Software

1. Insert the installation CD-ROM into your computer
2. The menu will be opened automatically (if installation doesn't start immediately, double-click Setup.exe in your CD-ROM directory).

Using the Software


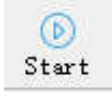
1. Interface and basic functions



Area	Description
1	Menu and toolbar
2	Shows the live-data from the DMM
3	Data items, contain live-data and store-data
4	Data details, contain a table, a histogram, and a chart

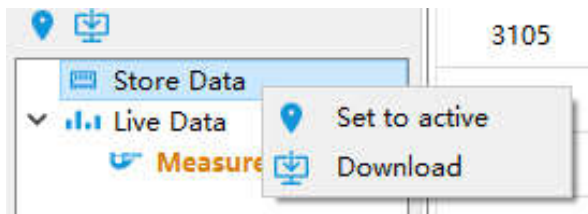
2. Get live-data

Make sure the meter and computer are connected via a USB cable

1. Click the  and the software will attempt to connect to the meter
2. Click the  and the software will get data from the meter
3. Live-data will be displayed in area 2
4. Data details will be saved in the form of tables, histograms, and graphs.

3. Get store-data


1. Right click the “Store Data” item in area 3 and select “Download”.



2. The stored-data will be saved in the “Store Data” item.


4. Import and export

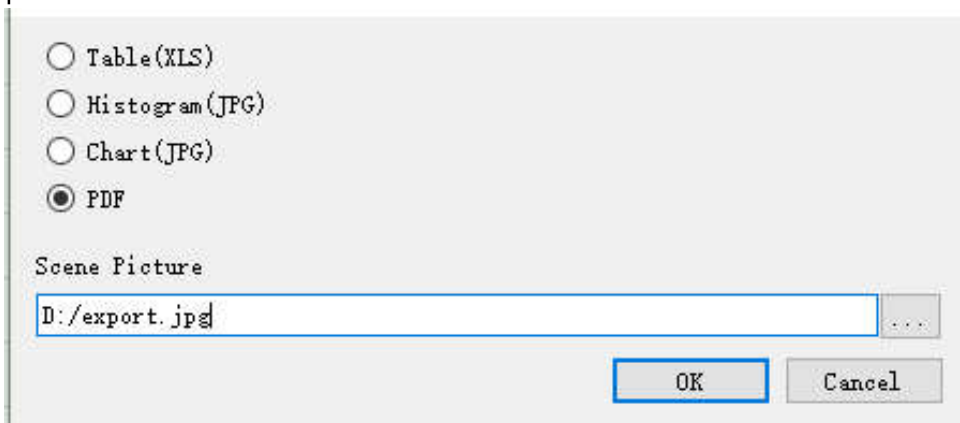
- Import

1. Click the  Import
2. Select a file
3. In area 3, an item starting with “Import” will be created, and the store-data will be stored in this item.



- Export

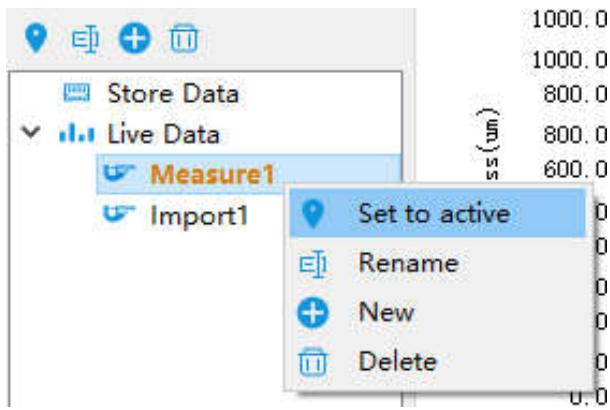
1. Click the  Export
2. Select the export project as needed. If you export to PDF, you can select a scene picture.



3. Input file name

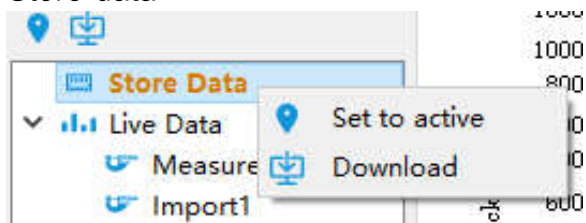
5. Item operation

- Live-data



Name	Description
Set to active	Set the selected item to be activated, and the received data will be saved to this item.
Rename	Rename the selected item
New	Create a new item and set it to active
Delete	Delete the selected item

- Store-data



Name	Description
Set to active	Set the selected item to be activated
Download	Download store data